

Office of Facilities Information Services

A division of Campus Planning & Construction

Vanderbilt University



How to create a HPGL/2 file with AutoCad 2002

DRAFT

Note: This document is preliminary and subject to change.

The Office of Facilities Information Services, known as OFIS, requires record set deliverables to be delivered in a digital format known as HPGL/2. HPGL/2 is an abbreviation of *Hewlett-Packard Graphics Language*, a set of commands for controlling plotters and printers. HPGL is part of Hewlett-Packard's PCL Level 5.

This file format provides a “snapshot view” of intended output. OFIS uses this file to reproduce documents as the creator intended. Most print devices will accept and print this file with no intervention. However, some software incorrectly creates this file. This document is directed to one of these application, AutoCad.

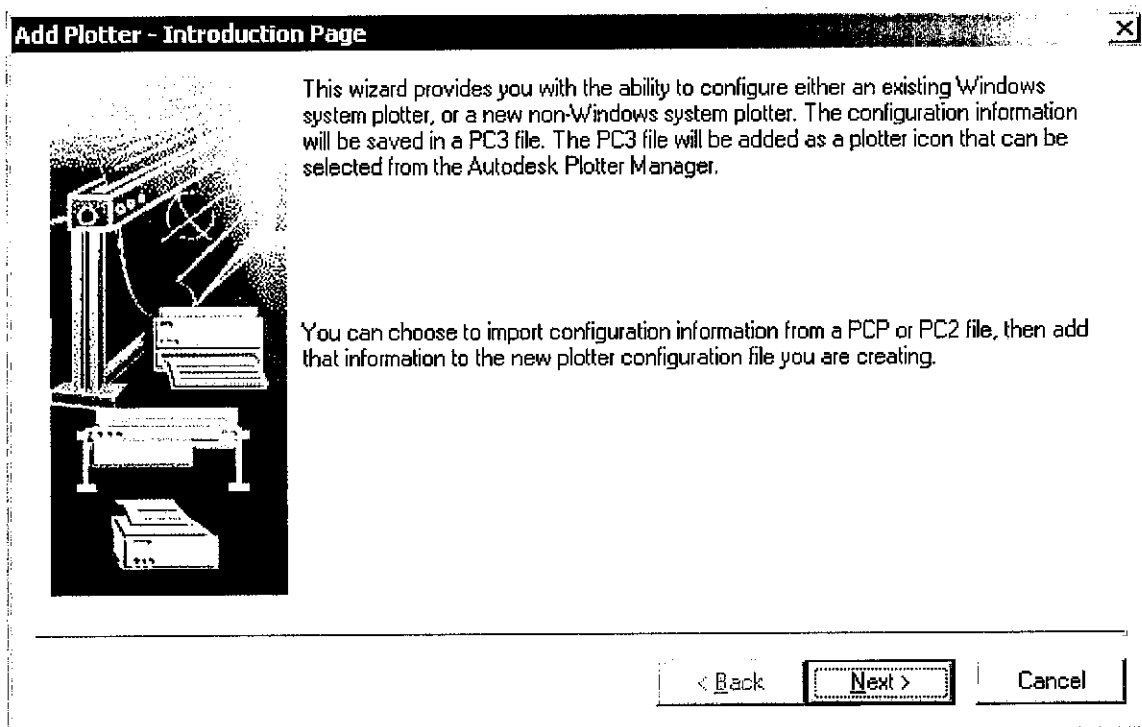
AutoCad 2002 was used to create the screen captures, although the process should be similar in AutoCad 2000. AutoCad 14 did not have the HPGL/2 file creation problems.

In AutoCad 14, the process to create a HPGL/2 output file was simple. One could simple check the output to file box when using a Hewlett Packard Plotter. In AutoCad 2000 & 2002, using this method produced odd results. Data would be missing or garbled. Research into the problem revealed switching device drivers in AutoCad corrected the problem. Below are step-by-step instructions for creating this driver file.

DRAFT

Running the Wizard

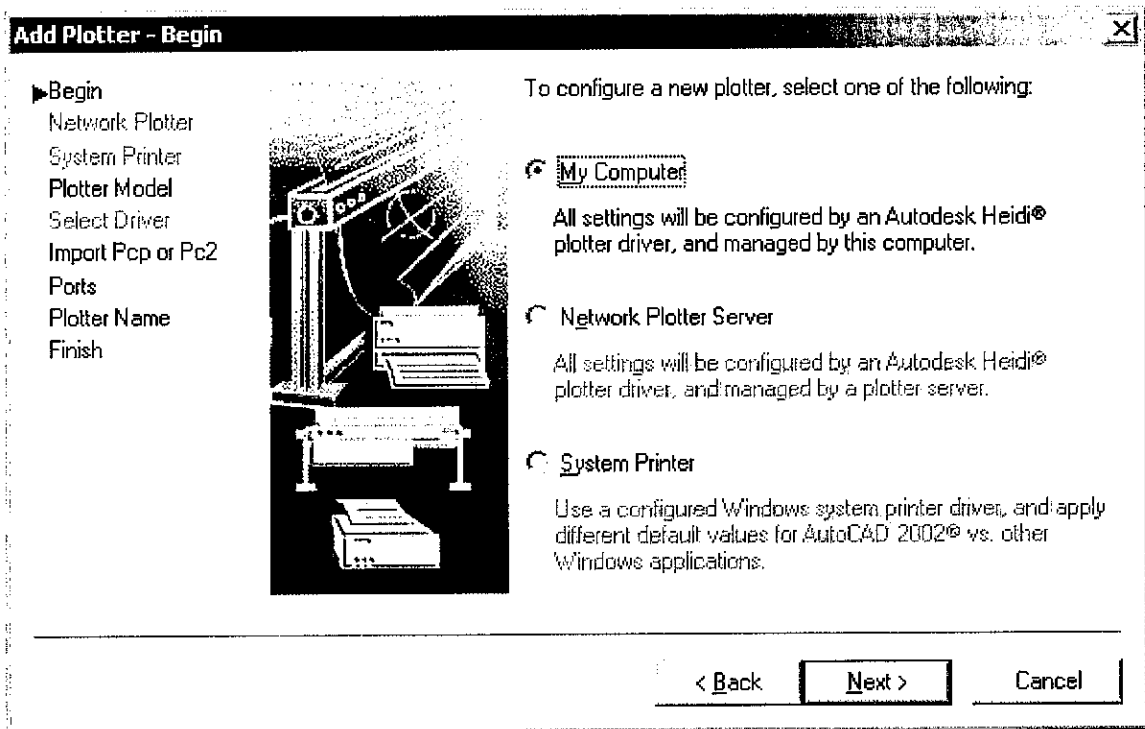
Locate ADDPLWIZ.EXE. It's usually found in the directory in which AutoCad was installed. Running this wizard produces the following dialog box:



In most cases the default selection may be taken.

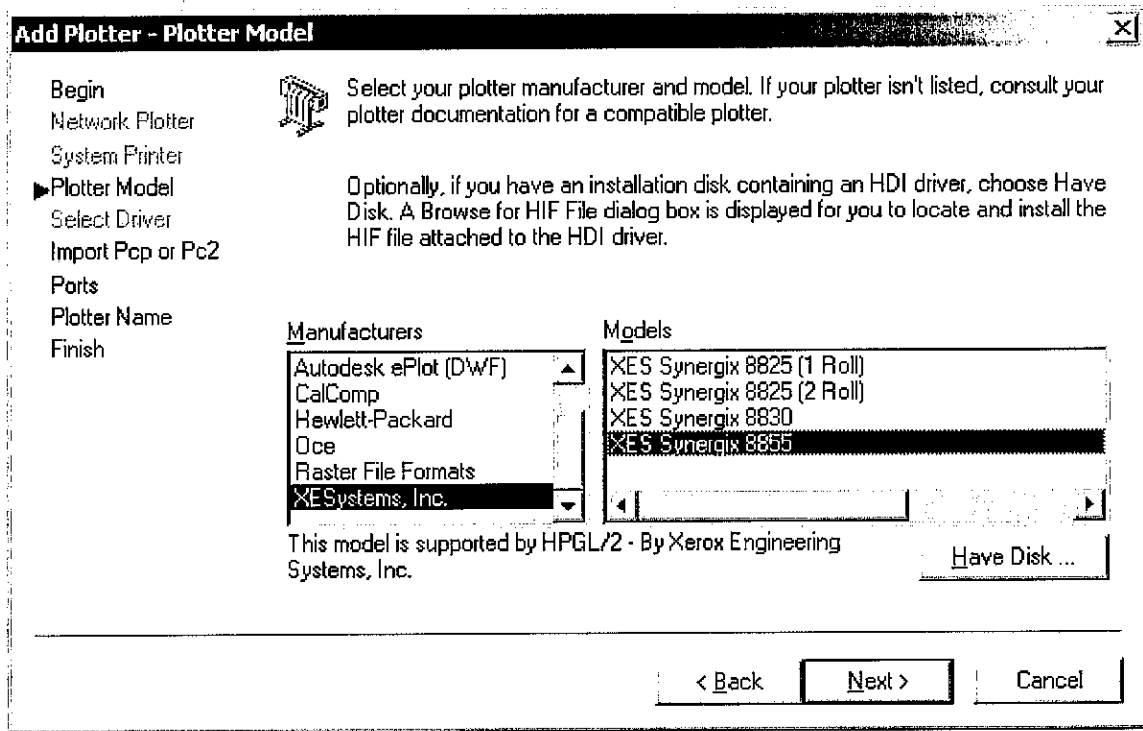
DRAFT

The wizard needs to know where the device is located. For our purpose, we will tell it the device is local to this computer.



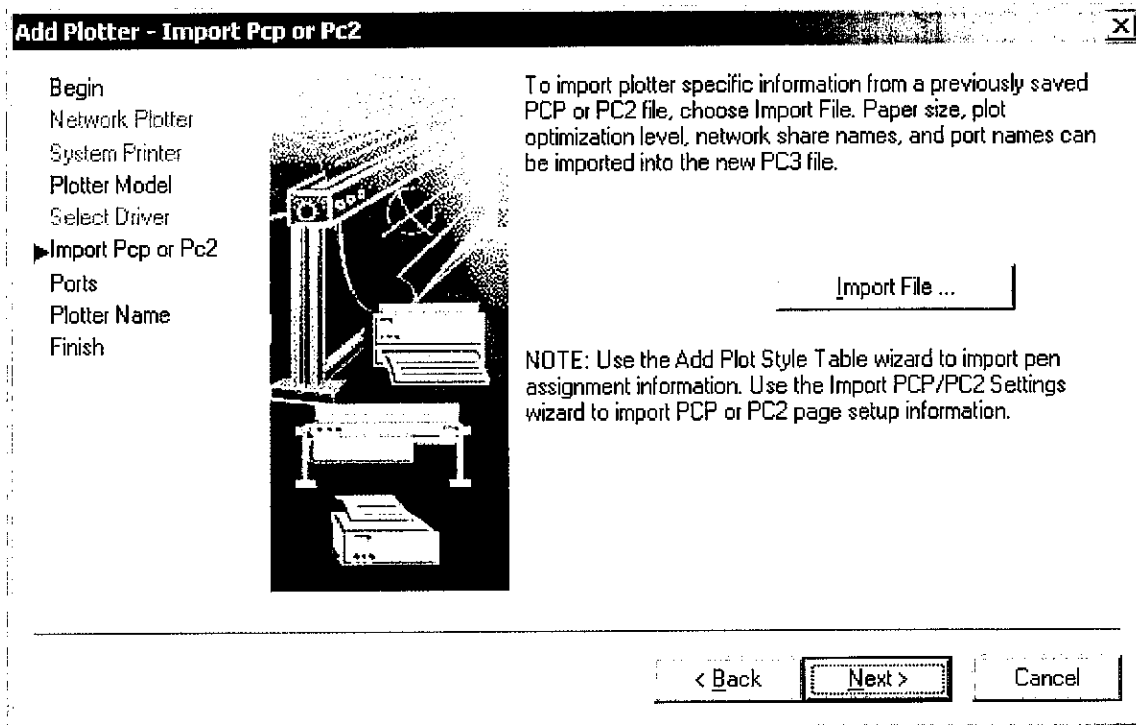
DRAFT

This is the part that seems odd but is the one that works the best. Choose XESystems, Inc. / XES Synergix 8855 driver.



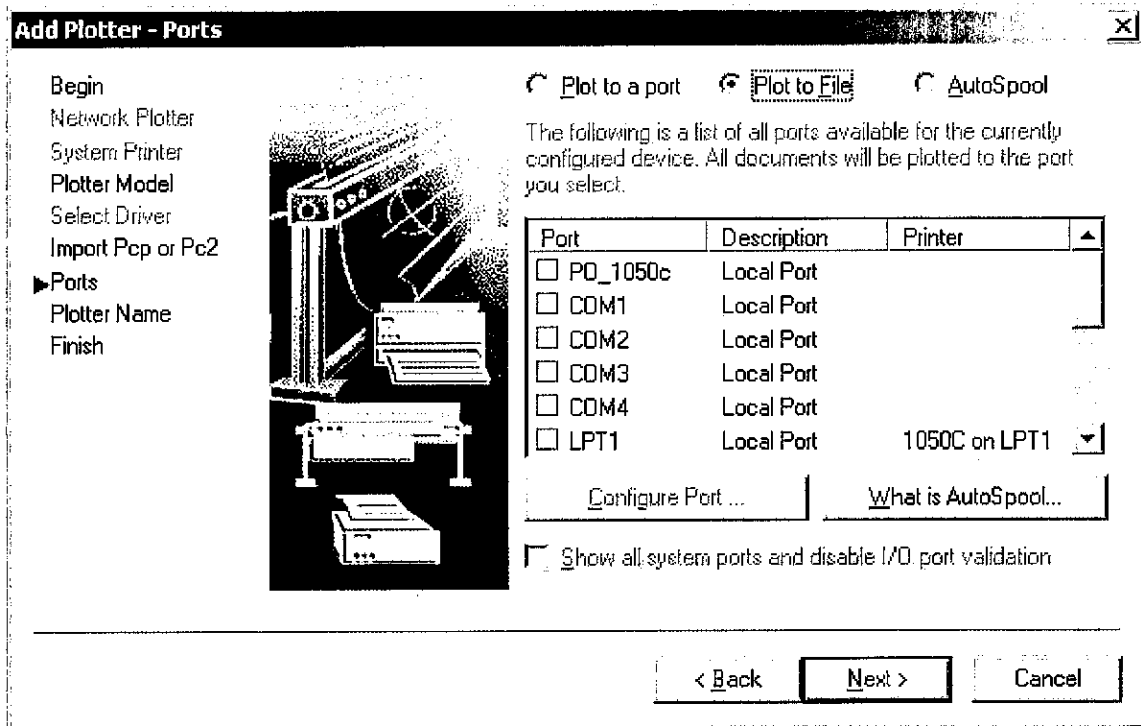
DRAFT

No imports so click next.



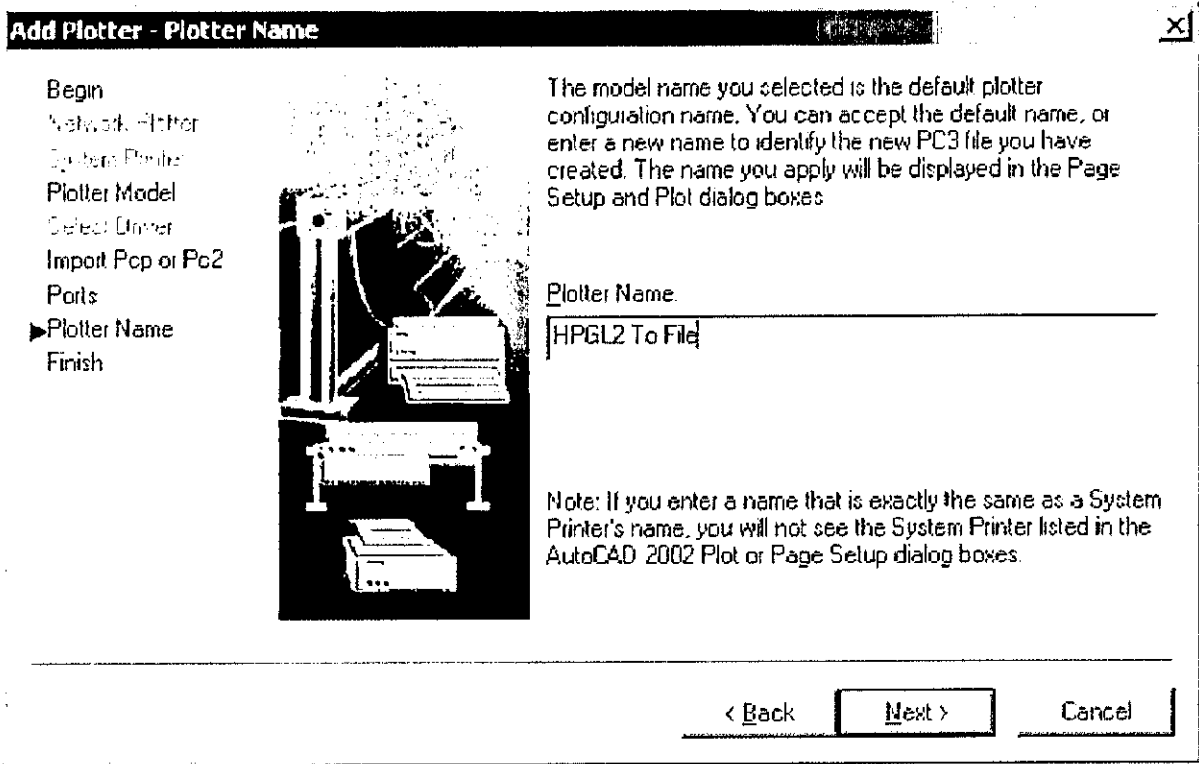
DRAFT

Select, PLOT TO FILE. This will create our PLT file on disk.



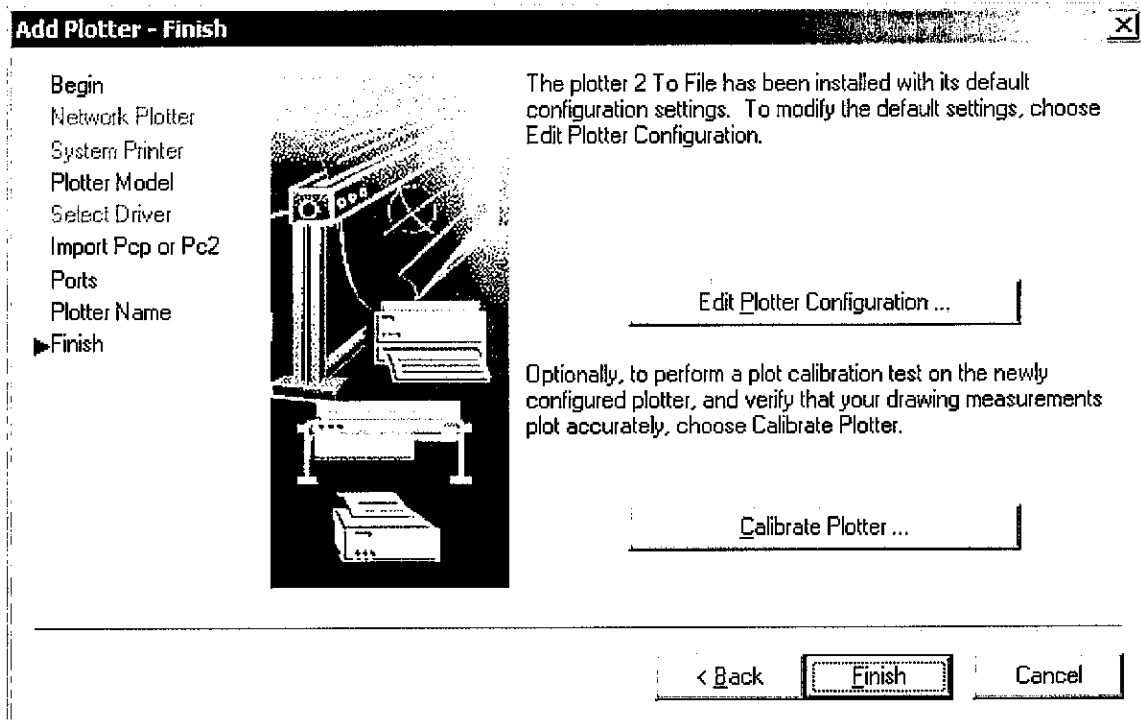
DRAFT

Give the new device a name you can understand. I recommend HPGL2 To File.



DRAFT

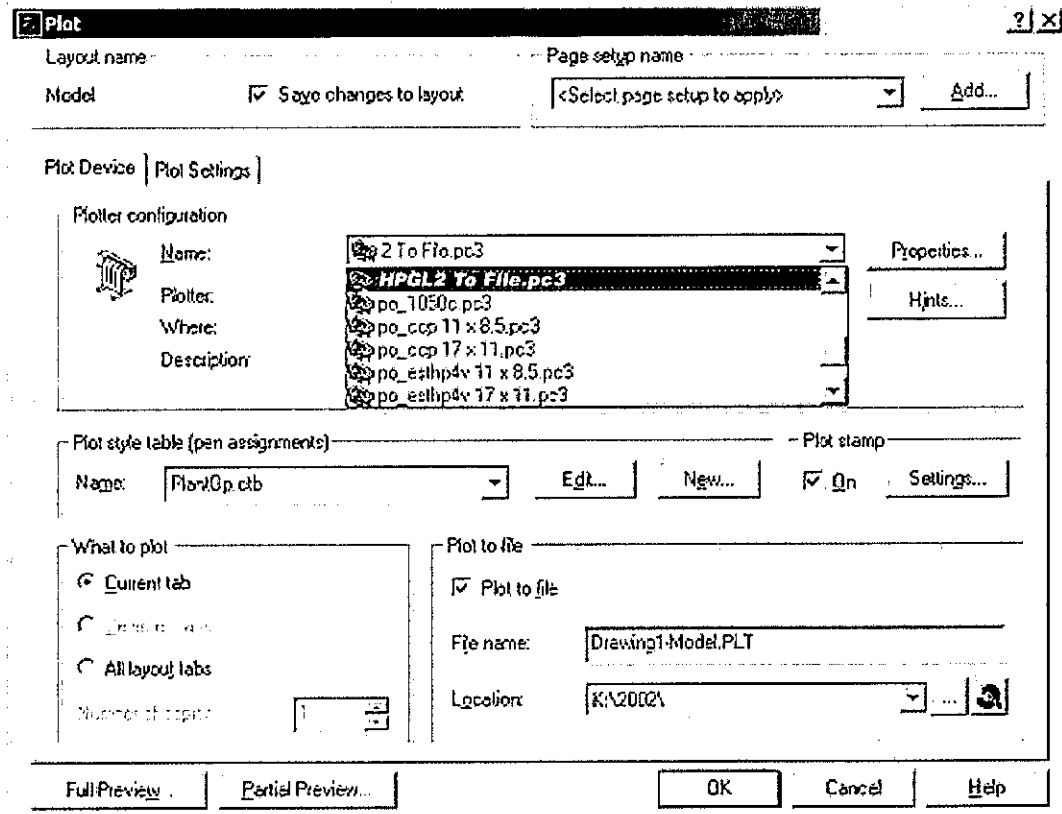
Defaults should be fine, click FINISH.



The AutoCad PC3 file has been created. We just select it when we need to create our HPGL/2 PLT file.

DRAFT

In AutoCad, select our newly created PC3 file. It should force you to choose a file name.



For comments or corrections contact Huey Brantley at Vanderbilt University. huey.brantley@vanderbilt.edu

Thanks to Roy Whitaker at Vanderbilt University and Pro Graphics for helping create this method.

DRAFT